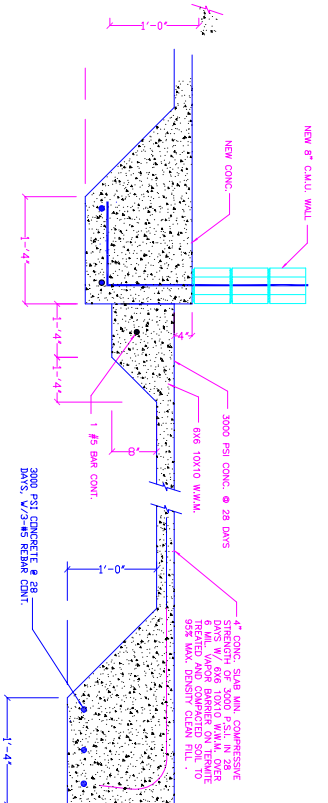
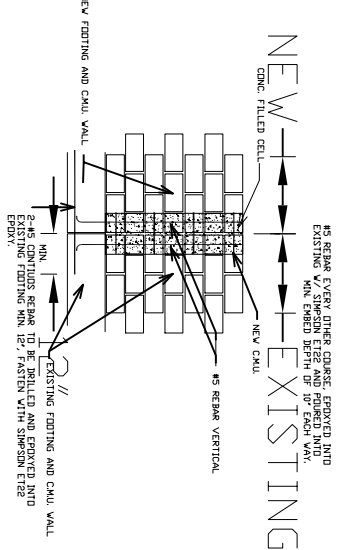


FOUNDATION PLAN
SCALE: 1/4" = 1'-0"



PORCH FOOTING DETAIL
SCALE: N.T.S.



WALL / FOOTING TIE IN DETAIL
SCALE: N.T.S.

POWER LINTEL - P3box8 (7-5/8") 16" COMPOSITE

MARK NO.	NOMINAL SPAN	TOTAL LENGTH	FILED W/ DETAIL #1*	FILED W/ DETAIL #1*
L-1	1'-6"	2'-10"	4289	4289
L-2	2'-2"	3'-6"	4313	4313
L-3	2'-8"	4'-0"	3504	3504
L-4	3'-2"	4'-6"	2951	2951
L-5	3'-8"	5'-0"	2076	2076
L-6	4'-4"	5'-10"	1809	1809
L-7	5'-2"	6'-6"	1515	1515
L-8	5'-8"	7'-2"	1082	1082
L-9	6'-4"	7'-10"	999	999
L-10	7'-0"	8'-6"	771	771
L-11	7'-6"	9'-2"	761	771
L-12	8'-2"	10'-6"	529	548
L-13	8'-8"	11'-4"	444	450
L-14	9'-4"	12'-2"	398	404
L-15	10'-0"	13'-0"	350	356
L-16	10'-6"	13'-8"	302	308
L-17	11'-2"	14'-6"	254	260
L-18	11'-8"	15'-4"	206	212
L-19	12'-4"	16'-2"	158	164
L-20	13'-0"	17'-0"	110	116
L-21	13'-6"	17'-8"	62	68
L-22	14'-2"	18'-6"	14	20
L-23	14'-8"	19'-4"	6	12
L-24	15'-4"	20'-2"	0	6
L-25	16'-0"	21'-0"	0	0
L-26	16'-6"	21'-8"	0	0
L-27	17'-2"	22'-6"	0	0
L-28	17'-8"	23'-4"	0	0
L-29	18'-4"	24'-2"	0	0
L-30	19'-0"	25'-0"	0	0
L-31	19'-6"	25'-8"	0	0
L-32	20'-2"	26'-6"	0	0
L-33	20'-8"	27'-4"	0	0
L-34	21'-4"	28'-2"	0	0
L-35	22'-0"	29'-0"	0	0
L-36	22'-6"	29'-8"	0	0
L-37	23'-2"	30'-6"	0	0
L-38	23'-8"	31'-4"	0	0
L-39	24'-4"	32'-2"	0	0
L-40	25'-0"	33'-0"	0	0
L-41	25'-6"	33'-8"	0	0
L-42	26'-2"	34'-6"	0	0
L-43	26'-8"	35'-4"	0	0
L-44	27'-4"	36'-2"	0	0
L-45	28'-0"	37'-0"	0	0
L-46	28'-6"	37'-8"	0	0
L-47	29'-2"	38'-6"	0	0
L-48	29'-8"	39'-4"	0	0
L-49	30'-4"	40'-2"	0	0
L-50	31'-0"	41'-0"	0	0
L-51	31'-6"	41'-8"	0	0
L-52	32'-2"	42'-6"	0	0
L-53	32'-8"	43'-4"	0	0
L-54	33'-4"	44'-2"	0	0
L-55	34'-0"	45'-0"	0	0
L-56	34'-6"	45'-8"	0	0
L-57	35'-2"	46'-6"	0	0
L-58	35'-8"	47'-4"	0	0
L-59	36'-4"	48'-2"	0	0
L-60	37'-0"	49'-0"	0	0
L-61	37'-6"	49'-8"	0	0
L-62	38'-2"	50'-6"	0	0
L-63	38'-8"	51'-4"	0	0
L-64	39'-4"	52'-2"	0	0
L-65	40'-0"	53'-0"	0	0
L-66	40'-6"	53'-8"	0	0
L-67	41'-2"	54'-6"	0	0
L-68	41'-8"	55'-4"	0	0
L-69	42'-4"	56'-2"	0	0
L-70	43'-0"	57'-0"	0	0
L-71	43'-6"	57'-8"	0	0
L-72	44'-2"	58'-6"	0	0
L-73	44'-8"	59'-4"	0	0
L-74	45'-4"	60'-2"	0	0
L-75	46'-0"	61'-0"	0	0
L-76	46'-6"	61'-8"	0	0
L-77	47'-2"	62'-6"	0	0
L-78	47'-8"	63'-4"	0	0
L-79	48'-4"	64'-2"	0	0
L-80	49'-0"	65'-0"	0	0
L-81	49'-6"	65'-8"	0	0
L-82	50'-2"	66'-6"	0	0
L-83	50'-8"	67'-4"	0	0
L-84	51'-4"	68'-2"	0	0
L-85	52'-0"	69'-0"	0	0
L-86	52'-6"	69'-8"	0	0
L-87	53'-2"	70'-6"	0	0
L-88	53'-8"	71'-4"	0	0
L-89	54'-4"	72'-2"	0	0
L-90	55'-0"	73'-0"	0	0
L-91	55'-6"	73'-8"	0	0
L-92	56'-2"	74'-6"	0	0
L-93	56'-8"	75'-4"	0	0
L-94	57'-4"	76'-2"	0	0
L-95	58'-0"	77'-0"	0	0
L-96	58'-6"	77'-8"	0	0
L-97	59'-2"	78'-6"	0	0
L-98	59'-8"	79'-4"	0	0
L-99	60'-4"	80'-2"	0	0
L-100	61'-0"	81'-0"	0	0

NOTE: (1) ALL LINTELS GREATER THAN 22'-0" IN LENGTH WILL REQUIRE (2) #3 BARS TOP OR (2) #3 BARS TOP & BOTTOM

THIS STRUCTURE MEETS OR EXCEEDS ALL THE REQUIREMENTS OF SECTION 1606 OF THE FLORIDA BUILDING CODE 2001 ADDITION.